



BOWLES & WYER

What you can expect along the process

Sometimes a new garden design can feel like
a lengthy process – but we've set out exactly
what you can expect along the way



FIRST VISIT

First of all, we'll visit you to discover what you like, love and hope for in your new garden – as we believe great landscapes come through collaboration. And with your thoughts in mind, we'll see and assess the site with our design team.



FEE QUOTE

We'll then write a 'brief' for the garden – essentially confirming what you've told us you're looking for and making sure we've understood. We'll also send across a fee quote to let you know some of the initial costs.



CONCEPT DESIGN

This is the creative stage of the process, where we take your thoughts and turn them into inspirational ideas for your garden. We'll create sketches for 2 or 3 design options, so you can choose the look you want for your space. It's important to get your input at this stage, so we'll also show you some plans, different sketch views, a broad masterplan and any relevant images, so you can visualise and understand our ideas.



VISIT

We'll then meet with you to present our ideas and discuss your options

The process of creating a new garden

BOWLES & WYER



DEVELOPED DESIGN

We'll take on board any feedback from our last visit with you, and start developing your garden design further. At this stage, we'll be crystallising ideas to create one final layout for your space. We'll create a plan, visuals and more detailed drawings. And we'll start putting together our recommendations for landscape levels, key materials and plants. These designs will then be ready to take to the planning control, if needed.



FINAL APPROVAL

We'll meet with you to present the developed designs, where you'll be able to make your final decisions. We'll also need to make some other choices – for example, would you like us to build the garden for you or will you be using an external contractor? We'll also decide on the budget for the project and potential timelines to get started on the next phase.



DETAILED DESIGN

This is when we get into the nitty-gritty of the masterplan and fix down all the finer details. We'll make final decisions about the levels, materials and plants, as well as creating a comprehensive planting list. We'll also be submitting the design for planning at this stage, if needed. We'll be working closely with your consultants, architects and engineers to ensure this stage of the design runs smoothly.



LOOKING FORWARD

We'll then get your feedback on the detailed designs, and discuss pricing in detail, along with a timescale for the build. You can still make minor tweaks, but all major design decisions will have been made. At this point, we'll offer you the option of our expert horticultural team to tend your garden, once completed.



CONSTRUCTION

We're now ready to get underway with construction, according to our agreed timescales and our project plan. We'll make any final adjustments along the way with our award-winning construction team. Or if you're using external contractors, we'll ensure the handover runs as smoothly as possible and that they're fully briefed on the build.



TECHNICAL DESIGN

If you're choosing to use our company for the build of the garden, this design stage isn't always necessary and certainly won't be to the level of detail otherwise needed for external contractors. This is when we'll produce detailed construction drawings to full specification and with all standards listed, and complete planting designs and schedules. Essentially, making sure everything is detailed and ready to hand over to the construction team!



FINISH DATE

We'll be working to an agreed finish date – of course there are sometimes issues along the way, but we'll keep you posted as we go.



VISIT

Whilst things might start getting decidedly more messy in your garden, we'll keep checking in to make sure everything is running to plan and resolve any issues that you might have. If you're using our construction team, you can expect regular visits from our Design & Build directors, foremen, project managers and our designers are always on-hand too. Our job is to keep on top of everything so that there's less for you to worry about.



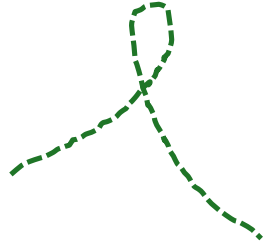
SNAGGING

Our design and build teams will then visit your garden to check everything is as it should be. We allow for a 'snagging period' where we'll sort out any niggling problems that may crop up, resolve any issues and make sure your garden is looking absolutely perfect!



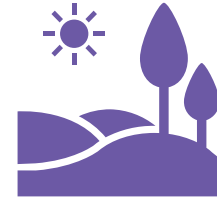
VISIT

After we've resolved any initial issues, we'll meet with you to check that you're happy with everything. This is your chance to bring up any concerns that we can help resolve – as this will be the end of the project.



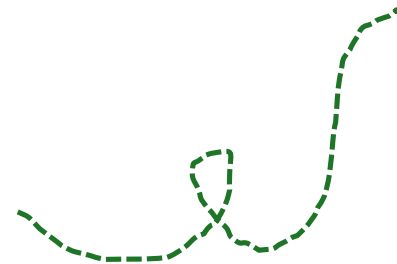
SETTLING IN

It might take a little while for your garden to settle in and start looking its best. We advise it will take about 12-18 months for plants to fill out – of course sometimes it's quicker, but it all depends on your planting and the weather! If we're tending your garden, our horticultural team will not only keep your garden looking pristine, but will ensure it develops and grows in the best way possible. And even if you're not using our award-winning aftercare service, we can still advise you on how to look after your garden.



REACHING MATURITY

We reckon it takes between 3 to 5 years before you have a 'mature' garden – which is when it will be looking really good. We'll be checking in with you along the way to see how the garden develops – and most importantly, how you're enjoying it!



We're all ears

If you have any questions, we're looking forward to hearing from you

hello@bowleswyer.co.uk

01296 662 439